

ARMY TM 11-5820-804-20P
NAVY NAVELEX 0969-LP-169-4040
AIR FORCE TO 31R5-2G-274-1

**ORGANIZATIONAL MAINTENANCE REPAIR PARTS
AND SPECIAL TOOLS LISTS
FOR**

**MODEM, DIGITAL DATA-INTERCONNECT FACILITY MD-920A/G
(NSN 5820-00-155-8576)**

**DEPARTMENTS OF THE ARMY, THE NAVY, AND THE AIR FORCE
AUGUST 1979**

TECHNICAL MANUAL
No. 11-5820-804-20P
TECHNICAL MANUAL
NAVELEX 0969-LP-169-4042
TECHNICAL ORDER
TO 31R5-2G-274-1

THE NAVY, AND THE AIR FORCE
DEPARTMENTS OF THE ARMY,
WASHINGTON, DC, 21 August 1979

**ORGANIZATIONAL MAINTENANCE REPAIR PARTS AND SPECIAL TOOLS LISTS
FOR
MODEM, DIGITAL DATA-INTERCONNECT FACILITY MD-920A/G
(NSN 5820-00-155-8576)**

Current as of 24 January 1979

REPORTING OF ERRORS

You can improve this manual by recommending improvements using DA Form 2028-2 located in the back of the manual. Simply tear out the self-addressed form, fill it out as shown on the sample, fold it where shown, and drop it in the mail.

If there are no blank DA Forms 2028-2 in the back of your manual, use the standard DA Form 2028 (Recommended Changes to Publications and Blank Forms) and forward to the Commander, US Army Communications and Electronics Materiel Readiness Command, ATTN: DRSEL-ME-MQ, Fort Monmouth, New Jersey 07703.

For Air Force, submit AFTO Form 22 (Technical Order System Publication Improvement Report and Reply) in accordance with paragraph 6-5, Section VI, T.O. 00-5-1. Forward direct to prime ALC/MST.

For Navy, mail comments to the Commander, Naval Electronic Systems Command, Training and Publications Management Office, ELEX 04F3, P.O. Box 80337, San Diego, CA 92138.

In either case a reply will be furnished direct to you.

Table of Contents

		Page	Illus Figure
SECTION	I. Introduction	1	
	II. Repair Parts List	5	
Group	00 Modem Digital Data-Interconnect Facility MD-920A/G	5	1
	01 Control Panel A1	9	2
SECTION	III. Special tools list (Not applicable)		
	IV. National stock number and part number index	10	

*This manual supersedes TM 11-5820-804-20P/NAVELEX 0969-LP-169-4040/TO 31R5-2G-264-1, 17 December 1976.

SECTION I
INTRODUCTION

1. Scope

This manual lists spares and repair parts; special tools; special test, measurement, and diagnostic equipment (TMDE), and other special support equipment required for performance of organizational maintenance of the MD-920A/G. It authorizes the requisitioning and issue of spares and repair parts as indicated by the source and maintenance codes.

2. General

This Repair Parts and Special Tools List is divided into the following sections:

a. Section II. Repair Parts List. A list of spares and repair parts authorized for use in the performance of maintenance. The list also includes parts which must be removed for replacement of the authorized parts. Parts lists are composed of functional groups in numeric sequence, with the parts in each group listed in figure and item number sequence.

b. Section III. Special Tools List. Not applicable.

c. Section IV. National Stock Number and Part Number Index. A list, in National item identification number (NIIN) sequence, of all National stock numbers (NSN) appearing in the listings, followed by a list, in alphameric sequence, of all part numbers appearing in the listings. National stock numbers and part numbers are cross-referenced to each illustration figure and item number appearance.

3. Explanation of Columns

a. Illustration. This column is divided as follows:

(1) *Figure number.* Indicates the figure number of the illustration on which the item is shown.

(2) *Item number.* The number used to identify item called out in the illustration.

b. Source, Maintenance, and Recoverability/erability (SMR) Codes.

(1) *Source code.* Source codes indicate the manner of acquiring support item for maintenance, repair, or overhaul of end items. Source codes are entered in the first and second positions of the Uniform SMR Code format as follows:

Code	Definition
PA-Item procured and	stocked for anticipated or known usage.

XB-Item is not procured or stocked, If nut available through salvage, requisition.

NOTE

Cannibalization or salvage may be used as a source of supply for any items source coded above except those coded XA and aircraft support items as restricted by AR 700-42.

(2) *Maintenance code.* Maintenance codes are assigned to indicate the levels of maintenance authorized to USE and REPAIR support items. The maintenance codes are entered in the third and fourth positions of the Uniform SMR Code format as follows:

(a) The maintenance code entered in the third position will indicate the lowest maintenance level authorized to remove, replace, and use the support item. The maintenance code entered in the third position will indicate one of the following levels of maintenance:

Code	Application/Explanation
O - S	Support item is removed, replaced, used at the

(b) The maintenance code entered in the fourth position indicates whether the item is to be repaired and identifies the lowest maintenance level with the capability to perform complete repair (i.e., all authorized maintenance functions). This position will contain one of the following maintenance codes:

Code	Application/Explanation
Z-Nonreparable.	No repair is authorized.

(3) Recoverability code. Recoverability codes are assigned to support items to indicate the disposition action on unserviceable items. The recoverability code is entered in the fifth position of the Uniform SMR Code format as follows :

Recoverability codes

Definition

Z—Nonreparable item. When unserviceable, condemn and dispose at the level indicated in position 3.

c. National Stock Number. Indicates the National stock number assigned to the item and will be used for requisitioning purposes.

d. Part Number. Indicates the primary number used by the manufacturer (individual, company, firm, corporation, or Government activity), which controls the design and characteristics of the item by means of its engineering drawings, specifications, standards, and inspection requirements to identify an item or range of items.

NOTE

When a stock numbered item is requisitioned, the repair part received may have a different part number than the part being replaced.

e. Federal Supply code for **Manufacturer (FSCM)**. The FSCM is a g-digit numeric code listed in SB 708-42 which is used to identify the manufacturer, distributor, or Government agency, etc.

f. Description. Indicates the Federal item name and, if required, a minimum description to identify the item.

g. Unit of Measure (U/M). Indicates the standard of the basic quantity of the listed item as used in performing the actual maintenance func-

tion. This measure is expressed by a two-character alphabetical abbreviation (e.g., ea, in, pr, etc.). When the unit of measure differs from the unit of issue, the lowest unit of issue that will satisfy the required units of measure will be requisitioned.

h. Quantity Incorporated in Unit. Indicates the quantity of the item used in the breakout shown on the illustration figure, which is prepared for a functional group, subfunctional group, or an assembly.

4. Special Information

a. The following publications pertain to the MD-920A/G and its components :

TM 11-5820-804-12, Modem, Digital Data MD-920/G.

b. The illustrations in this manual are identical to those published in **TM 11-5820-804-34P**. Only those parts assigned the third position SMR maintenance code "C" or "O" are listed in the tabular listing: therefore, there may be a break in the item number sequence. Only illustrations containing organizational authorized items appear in this manual.

c. National stock numbers (NSN's) that are missing from P source coded items have been applied for and will be **added to this TM by future change/revision when they are entered in the Army Master Data File (AMDF)**. Until the NSN's are established and published, submit exception requisitions to : **Commander, US Army Communications and Electronics Materiel Readiness Command, ATTN: DRSEL-MM, Fort Monmouth, NJ 07703** for the part required to support your equipment.

5. How to Locate Repair Parts

a. When National stock number or part number is unknown.

(1) First. Using the table of contents, determine the functional group within which the item belongs. This is necessary since illustrations are prepared for functional groups and listings are divided into the same groups.

(2) Second. Find the illustration covering the functional group to which the item **belongs**.

(3) *Third.* Identify the item on the illustration and note the illustration figure and item number of the item.

(4) *Fourth.* Using the Repair Parts Listing, find the figure and item number noted on the illustration.

b. When National stock number or part number is known.

(1) *First.* Using the Index of National Stock

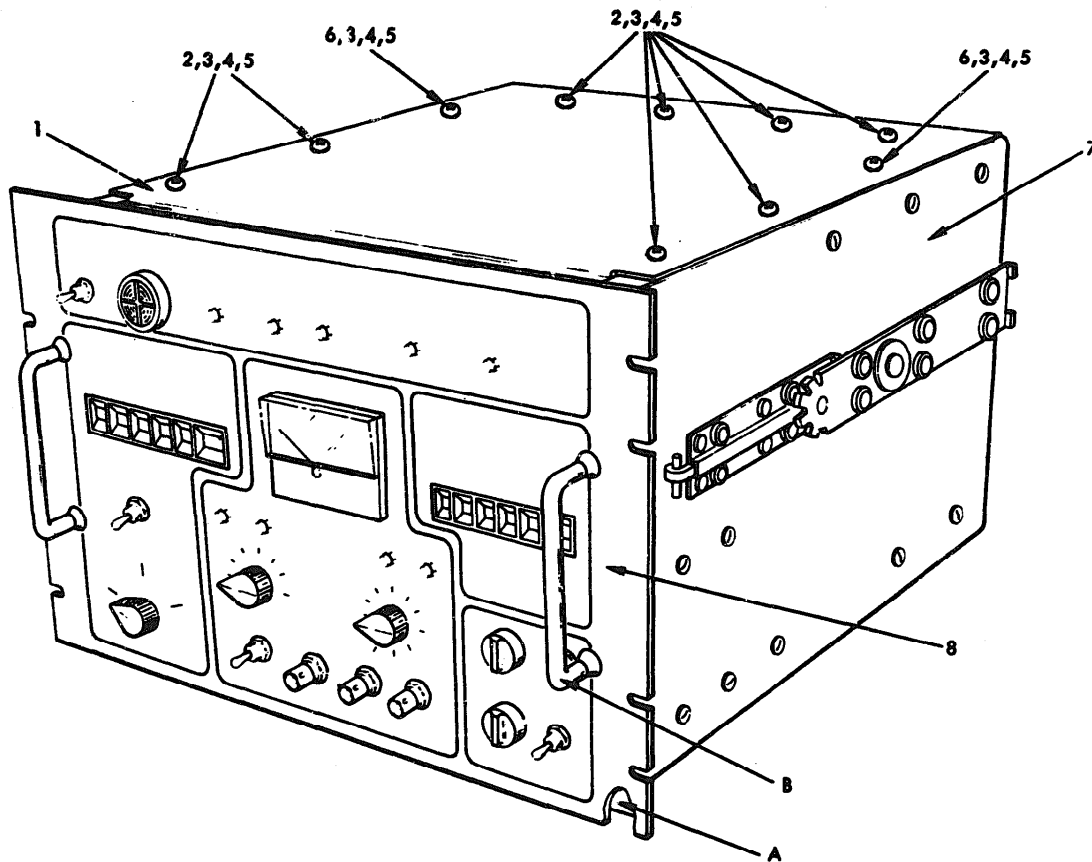
Numbers and Part Numbers, find the pertinent National stock number or part number. This index is in NIIN sequence followed by a list of part numbers in alphameric sequence, cross-referenced to the illustration figure number and item number.

(2) *Second.* After finding the figure and item number, locate the figure and item number in the repair parts list.

6. Abbreviations

Not applicable.

(Next printed page is 4)



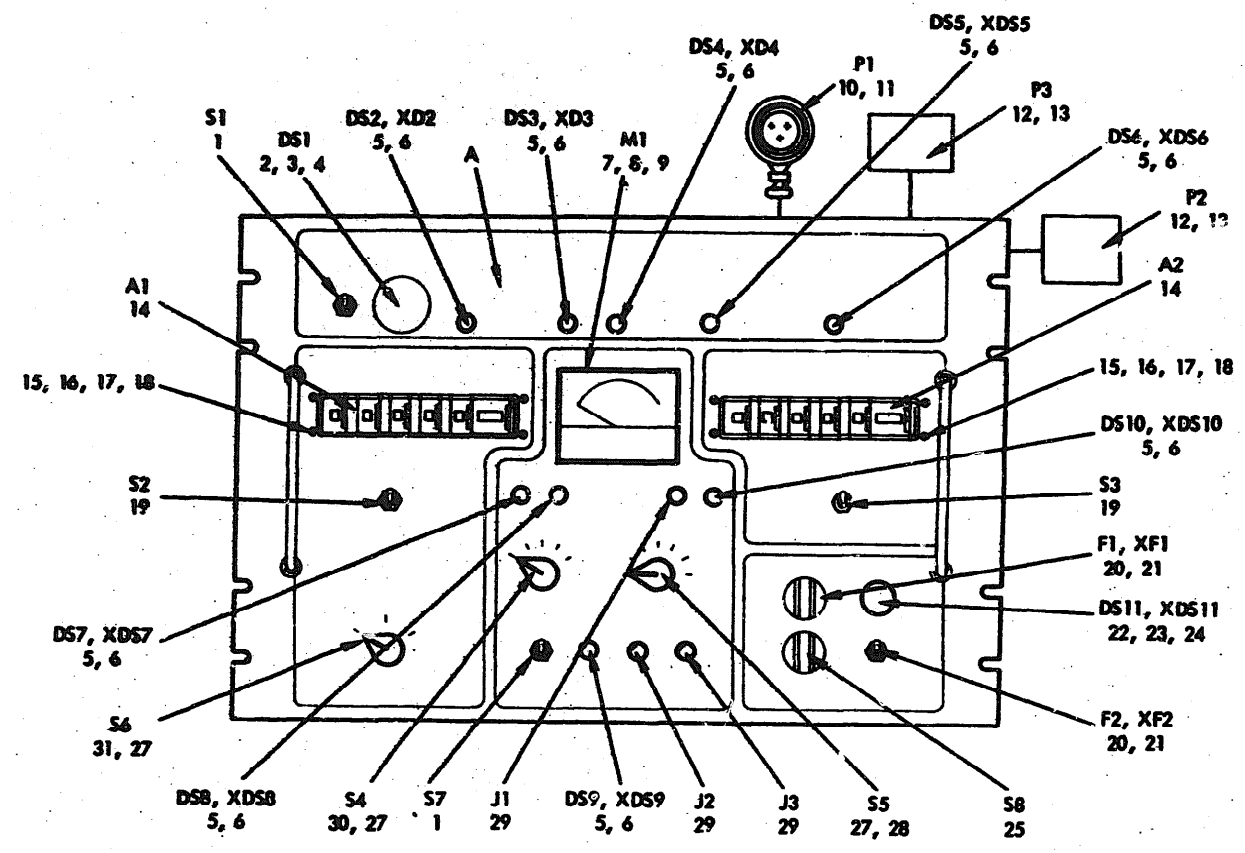
EL5B1001

Figure 1. Modem Digital Data-Interconnect Facility MD-920A/G

SECTION II

TM 11-5820-804-20P/NAVELEX 0969-LP-169-4040/TO 31R5-2G-274-1

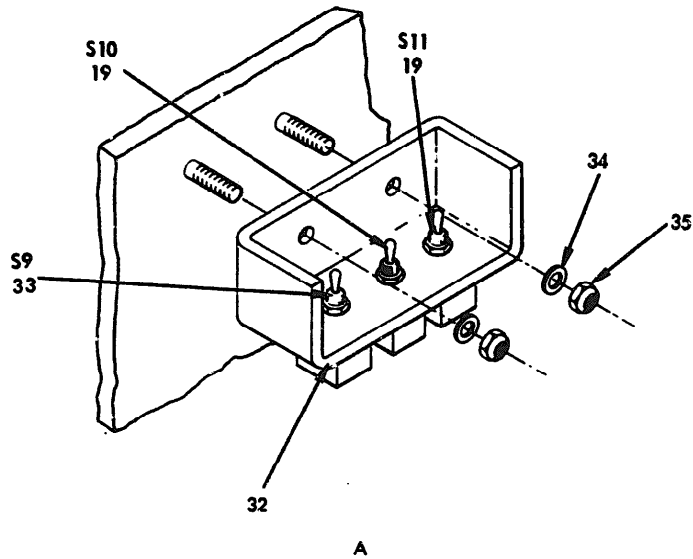
(1) ILLUSTRATION		(2) QSR CODE	(3) NATIONAL STOCK NUMBER	(4) PART NUMBER	(5) FSCM	(6) DESCRIPTION USABLE ON CODE	(7) U/M	(8) QTY INC IN UNIT
DD FIG NO.	(B) ITEM NO.							
GROUP 00 FEDER DIGITAL DATA-INTERCONNECT FACILITY MD-920A/G								
1	2	X8022	5325-00-687-5200	82-11-223-16	94222	STUD, TURNLK, FSTNR.....	EA	8
1	3	X8022		82-32-201-17	94222	WASHER, LOCK.....	EA	10
1	4	X8022	5310-00-775-5245	82-46-101-39	94222	WASHER, RECESSED.....	EA	10
1	5	X8022	5360-00-924-8167	43-13-1-24	94222	SPRING.....	EA	10
1	6	X8022	4120-00-963-0221	82-11-286-16	94222	STUD, TURNLK, FSTNR.....	EA	2



PREFIX ALL REFERENCE DESIGNATIONS WITH A1

EL581002

Figure 2. Control Pane, A1 (Sheet 1 of 2)



**PREFIX ALL REFERENCE
DESIGNATIONS WITH
A1**

EL5B1003

Figure 2. Control Panel, A1 (Sheet 2 of 2)

SECTION II

TM 11-5820-804-20P/NAVELEX 0969-LP-169-4040/TO 31R5-2G-274-1

(1) ILLUSTRATION		(2)	(3)	(4)	(5)	(6)	(7)	(8)
FIG NO.	ITEM FIG.	SNR CODE	NATIONAL STOCK NUMBER	PART NUMBER	PDCM	DESCRIPTION	U/M	QTY INC IN UNIT
						GROUP 01 CONTROL PANEL A1		
2	1	PA02Z	5930-00-683-2625	NS24523-31	96906	SWITCH, TOGGLE.....	EA	2
2	2	PA02Z	6350-00-102-4210	SC-628	37942	SIGNAL, ELECTRONIC.....	EA	1
2	3	PA02Z	6240-00-344-8582	C093-RC0-0510	03797	LAMP, CARTRIDGE, SOL I.....	EA	9
2	4	PA02Z	6210-00-421-1832	LM90/1	01349	LIGHT, INDICATOR.....	EA	9
2	19	PA02Z	5930-00-683-1629	NS24523-23	96906	SWITCH, TOGGLE.....	EA	4
2	20	PA02Z		NDX-5A	71400	FUSE, CARTRIDGE.....	EA	2
2	21	PA02Z	3920-00-881-6584	FHL 17G2	01340	FUSEHOLDER, EXTRACTO.....	EA	2
2	22	PA02Z	6240-00-682-3411	02A	08006	LAMP, GLOW.....	EA	1
2	23	PA02Z	6210-00-753-2270	LC14C03	01349	LENS, LIGHT.....	EA	1
2	24	PA02Z	6210-00-437-2887	LM76/2	01349	LIGHT, INDICATOR.....	EA	1
2	25	PA02Z	5930-00-984-9883	NS25307-222	96906	SWITCH, TOGGLE.....	EA	1
2	27	PA02Z	5355-00-881-0722	NS91920-1K45	96906	KNDS.....	EA	3
2	28	PA02Z	5930-00-113-7642	44030-03-1-AJM	01073	SWITCH, ROTARY.....	EA	1
2	30	PA02Z		44030-01-1-AJM	01073	SWITCH, ROTARY.....	EA	1
2	31	PA02Z	5930-00-118-4665	44440-02-1-3M	01073	SWITCH, ROTARY.....	EA	1
2	33	PA02Z	5930-00-789-6024	NS27407-1	96906	SWITCH, TOGGLE.....	EA	1

SECTION IV

NATIONAL STOCK NUMBER AND PART NUMBER INDEX

STOCK NUMBER	FIGURE NO.	ITEM NO.	STOCK NUMBER	FIGURE NO.	ITEM NO.
6350-00-102-4210	2	2	5325-00687-5208	1	2
5930-00-113-7642	2	28	6210-00-753-2270	2	25
5930-00-118-4665	2	31	5310-00-775-5245	1	4
6240-00-344-8582	2	5	5930-00-789-6024	2	33
6210-00-421-1832	2	6	5355-00-881-0722	2	27
6210-00-437-2887	2	24	5920-00-881-6584	2	21
6240-00-682-3411	2	22	5360-00-924-8167	1	5
5930-00-683-1625	2	1	4120-00-963-0221	1	6
5930-00-683-1629	2	19	5930-00-984-9883	2	25

PART NUMBER	FSCN	FIG. NO.	ITEM NO.	PART NUMBER	FSCN	FIG. NO.	ITEM NO.
82A	08806	2	22	MS91528-1K48	96906	2	27
C093-RCB-0510	03797	2	5	SC-628	37942	2	2
FNL17G2	81349	2	21	43-13-1-24	94222	1	5
LC14CD3	81349	2	23	44A60-02-1-3N	81073	2	31
LH76/2	81349	2	24	44D30-01-1-AJN	81073	2	30
LH90/1	81349	2	6	44D30-03-1-AJN	81073	2	28
MDX-5A	71400	2	20	82-11-220-16	94222	1	2
MS24523-23	96906	2	19	82-11-280-16	94222	1	6
MS24523-31	96906	2	1	82-32-201-17	94222	1	3
MS25307-222	96906	2	25	82-46-101-39	94222	1	4
MS27407-1	96906	2	33				

RECOMMENDED CHANGES TO EQUIPMENT TECHNICAL MANUALS



SOMETHING WRONG WITH THIS MANUAL?

THEN... JOT DOWN THE DOPE ABOUT IT ON THIS FORM, TEAR IT OUT, FOLD IT AND DROP IT IN THE MAIL!

FROM: (YOUR UNIT'S COMPLETE ADDRESS)

Commander
Stateside Army Depot
ATTN: ANSTA-US
Stateside, N.J. 07703

DATE 10 July 1975

PUBLICATION NUMBER

TM 11-5840-340-20P

DATE

23 Jan 78

TITLE

Radar Set AN/PRC-76

BE EXACT... PIN-POINT WHERE IT IS

PAGE NO.	PARA-GRAPH	FIGURE NO.	TABLE NO.
33			
44		19	
45			

IN THIS SPACE TELL WHAT IS WRONG AND WHAT SHOULD BE DONE ABOUT IT:

For item 2, change the NSN to read: 5835-00-134-9186.
Reason: Accuracy.

Identify the cover on the junction box (item no. 5).
Reason: It is a separate item and is not called out on figure 19.

Add the cover of the junction box as an item in the listing for figure 19.
Reason: Same as above.

TYPED NAME, GRADE OR TITLE, AND TELEPHONE NUMBER

SSG I. M. DeSpirito 999-1776

SIGN HERE:

SSG I. M. DeSpirito

DA FORM 2028-2
1 AUG 74

P.S.—IF YOUR OUTFIT WANTS TO KNOW ABOUT YOUR MANUAL "FIND" MAKE A CARBON COPY OF THIS AND GIVE IT TO YOUR HEADQUARTERS.

RECOMMENDED CHANGES TO EQUIPMENT TECHNICAL MANUALS



SOMETHING WRONG WITH THIS MANUAL?

THEN... JOT DOWN THE DOPE ABOUT IT ON THIS FORM, TEAR IT OUT, FOLD IT AND DROP IT IN THE MAIL!

FROM: (YOUR UNIT'S COMPLETE ADDRESS)

DATE

PUBLICATION NUMBER

TM 11-5820-804-20P

DATE

21 Aug 79

TITLE MDEM, DIGITAL DATA-INTERCONNECT FACILITY MD-920A/G

BE EXACT... PIN-POINT WHERE IT IS

PAGE NO.	PARA-GRAPH	FIGURE NO.	TABLE NO.
----------	------------	------------	-----------

IN THIS SPACE TELL WHAT IS WRONG AND WHAT SHOULD BE DONE ABOUT IT:

TEAR ALONG DOTTED LINE

TYPED NAME, GRADE OR TITLE, AND TELEPHONE NUMBER

SIGN HERE:

DA FORM 2028-2
1 AUG 74

P.S.--IF YOUR OUTFIT WANTS TO KNOW ABOUT YOUR MANUAL "FIND," MAKE A CARBON COPY OF THIS AND GIVE IT TO YOUR HEADQUARTERS.

FILL IN YOUR
UNIT'S ADDRESS

FOLD BACK

DEPARTMENT OF THE ARMY

OFFICIAL BUSINESS
PENALTY FOR PRIVATE USE, \$300

POSTAGE AND FEES PAID
DEPARTMENT OF THE ARMY
DDO-314



Commander
US Army Communications and
Electronics Materiel Readiness Command
ATTN: DRSEL-ME-MQ
Fort Monmouth, New Jersey 07703

TEAR ALONG DOTTED LINE

FOLD BACK

REVERSE OF DA FORM 2025-2

FILL IN YOUR
UNIT'S ADDRESS

FOLD BACK

DEPARTMENT OF THE ARMY

POSTAGE AND FEES PAID
DEPARTMENT OF THE ARMY
DDG-814



OFFICIAL BUSINESS
PENALTY FOR PRIVATE USE, \$300

Commander
US Army Communications and
Electronics Materiel Readiness Command
ATTN: DRSEL-ME-MQ
Fort Monmouth, New Jersey 07703

TEAR ALONG DOTTED LINE

FOLD BACK